

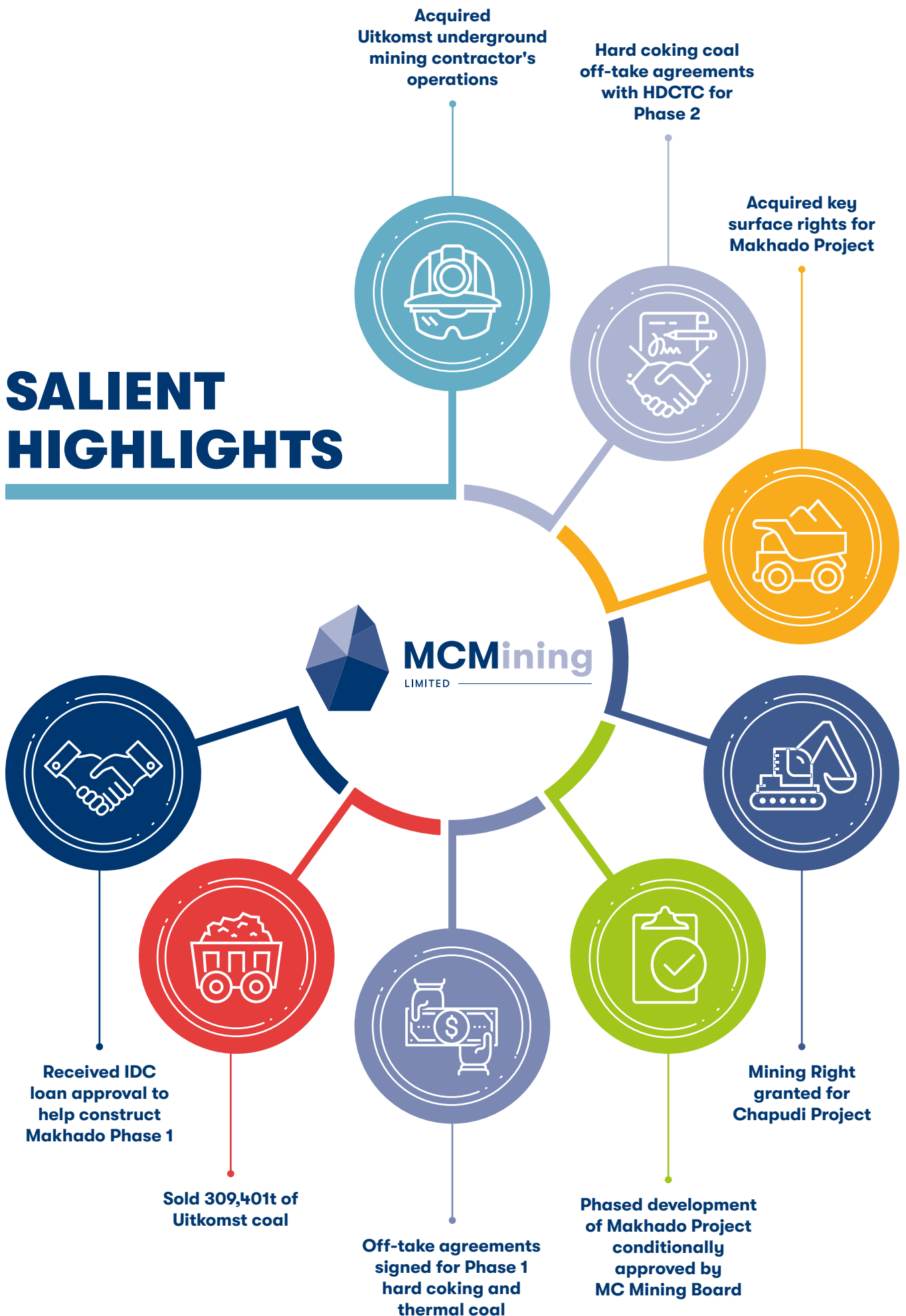


OVERVIEW

OUR VISION:

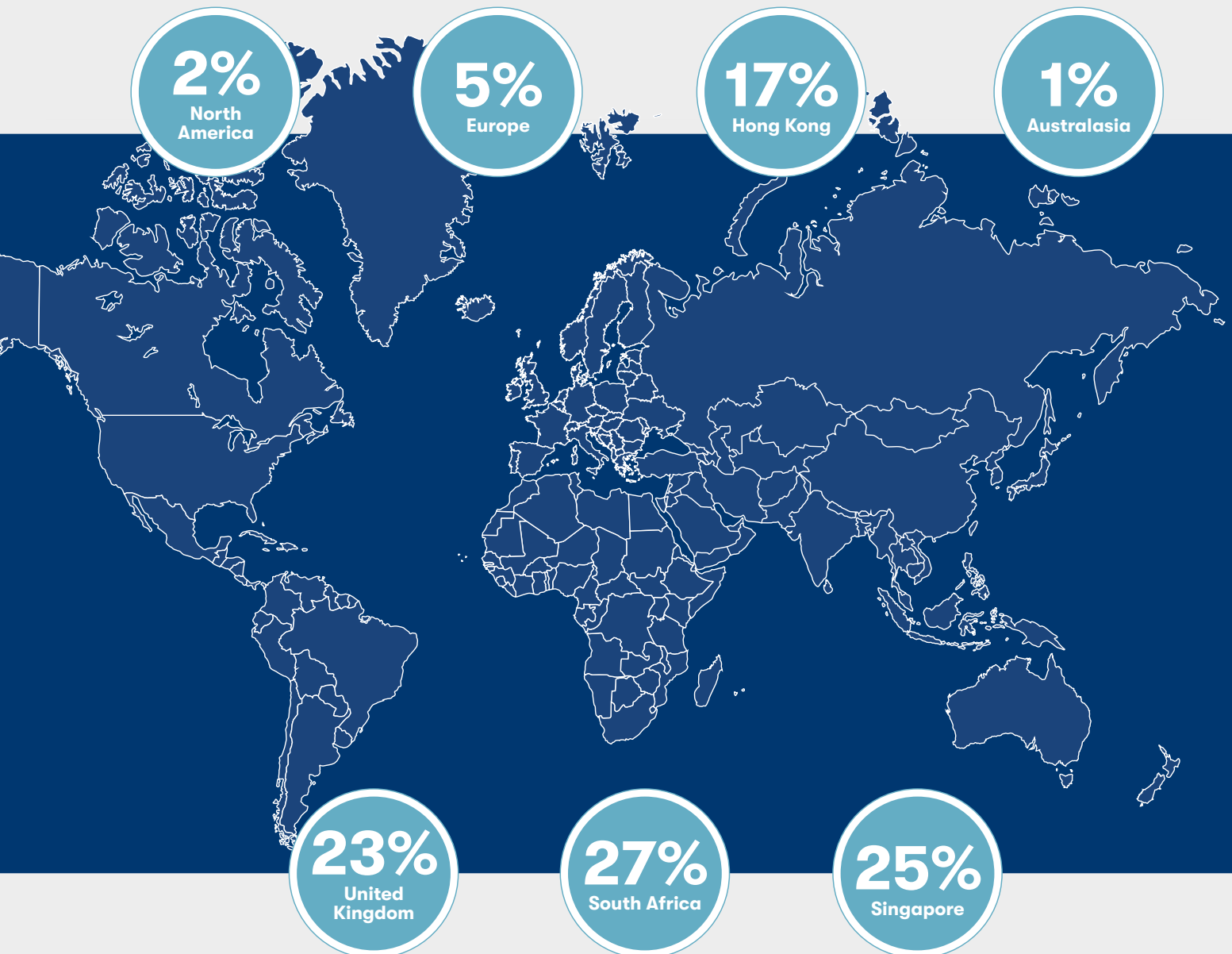
To be the premier
producer of hard
coking coal in
South Africa

SALIENT HIGHLIGHTS



WHO WE ARE

SHAREHOLDERS BY GEOGRAPHY as at 31 August 2019

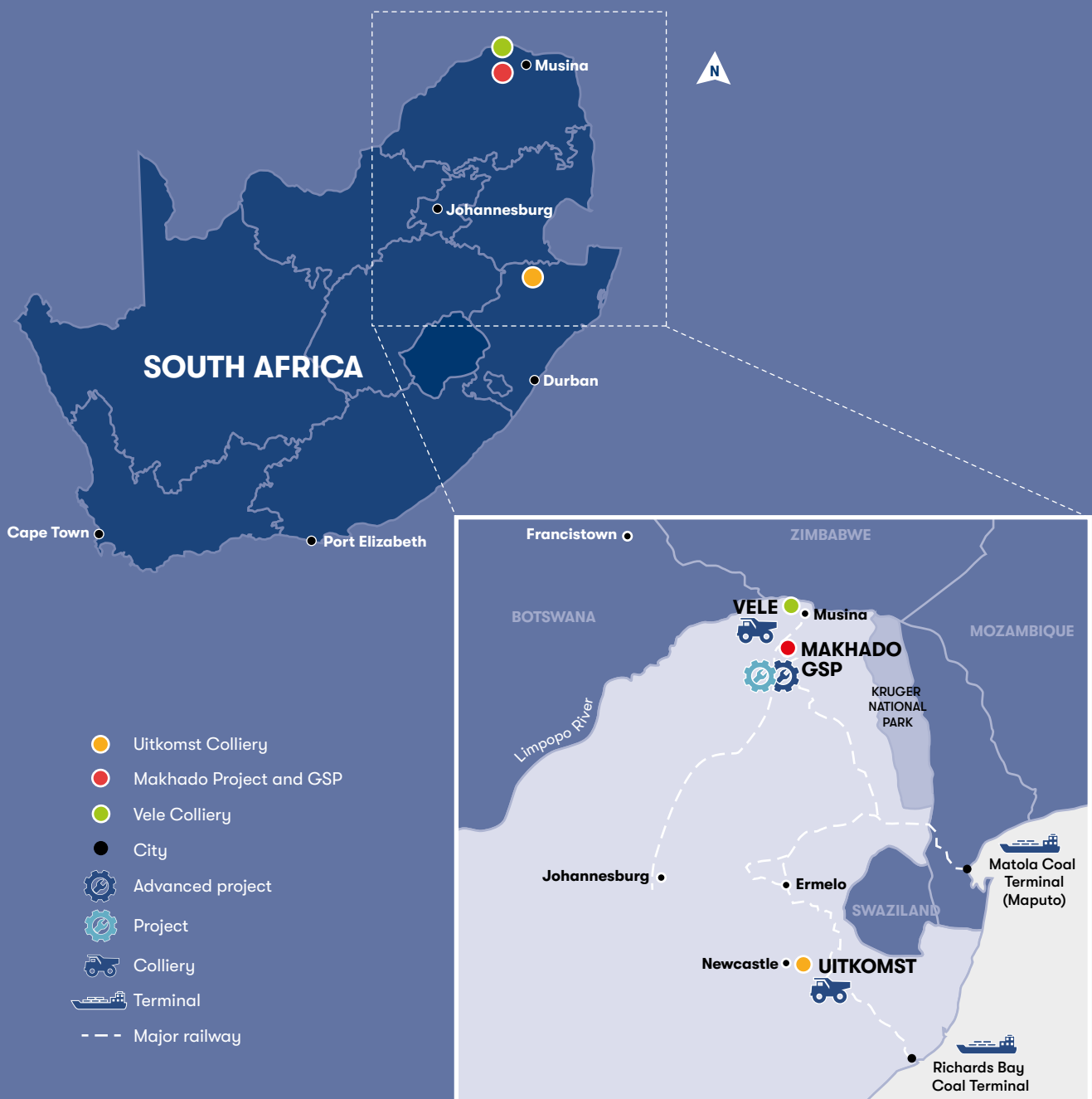


MC Mining, a coal mining company whose high-quality South African metallurgical and thermal coal assets encompass long reserve life and growth options, ensuring the Company is well-positioned for growth. The safety and health of our people takes precedence and a Zero Harm culture is embedded in all activities. We believe in shared value and strive to create and enhance sustainable value for stakeholders by maximising the benefits of mining for all stakeholders, particularly our host communities.

WHERE WE OPERATE

MC Mining has high-quality coking and thermal coal assets located in the Limpopo and KwaZulu-Natal provinces of South Africa.

The Company's key assets include Uitkomst Colliery (metallurgical coal), Makhado Project (hard coking and thermal coal), Vele Colliery (semi-soft coking and thermal coal) and the Greater Soutpansberg Projects (GSP) (coking and thermal coal).



OUR ASSET BASE



MAKHADO PROJECT

FLAGSHIP PROJECT

RESERVES

344.8Mt

mineable tonnes *in situ*

LOCATION

**Soutpansberg Coalfield,
Limpopo province**

PRODUCT

Hard coking coal

REGULATORY STATUS

Fully compliant

STATUS

Construction of Phase 1 expected to commence in Q4 CY2019/ Q1 CY2020, funding dependent



UITKOMST COLLIERY

RESERVES

25.4Mt

mineable tonnes *in situ*

LOCATION

**Utrecht Coalfield,
KwaZulu-Natal**

PRODUCT

Metallurgical and thermal coal

FY2019 RUN-OF-MINE (ROM) PRODUCTION

485,113t

FY2019 SALES

309,401t

FY2019 REVENUE GENERATED

\$26.4m

MINING METHOD

Underground operation with planned life-of-mine (LoM) extension

REGULATORY STATUS

Fully compliant

STATUS

Cash generative, producing asset

NUMBER OF EMPLOYEES AND CONTRACTORS

555

FY2019 GROSS PROFIT

\$1.0m

FY2019 PRODUCTION COST/SALEABLE TONNE

\$46.94



VELE COLLIERY

RESERVES

361.6Mt

mineable tonnes *in situ*

LOCATION

**Tuli Coalfield,
Limpopo province**

PRODUCT

Semi-soft coking and thermal coal

REGULATORY STATUS

Fully compliant

STATUS

On care and maintenance since 2013 pending improvements in development of Musina Special Economic Zone (SEZ); existing processing plant will be modified as part of Makhado Phase 1



GREATER SOUTPANSBURG PROJECT¹

RESERVES

>1bn

mineable tonnes *in situ*

LOCATION

**Soutpansberg Coalfield,
Limpopo province**

PRODUCT

Coking and thermal coal

REGULATORY STATUS

Mining Right granted for Chapudi Project, waiting for granting of Generaal and Mopane Mining Rights

STATUS

Early stage exploration project

¹ Comprises Chapudi, Generaal and Mopane Projects

THE COMPANY'S OPERATIONAL FOCUS

is the development and mining of high quality metallurgical coal projects in South Africa